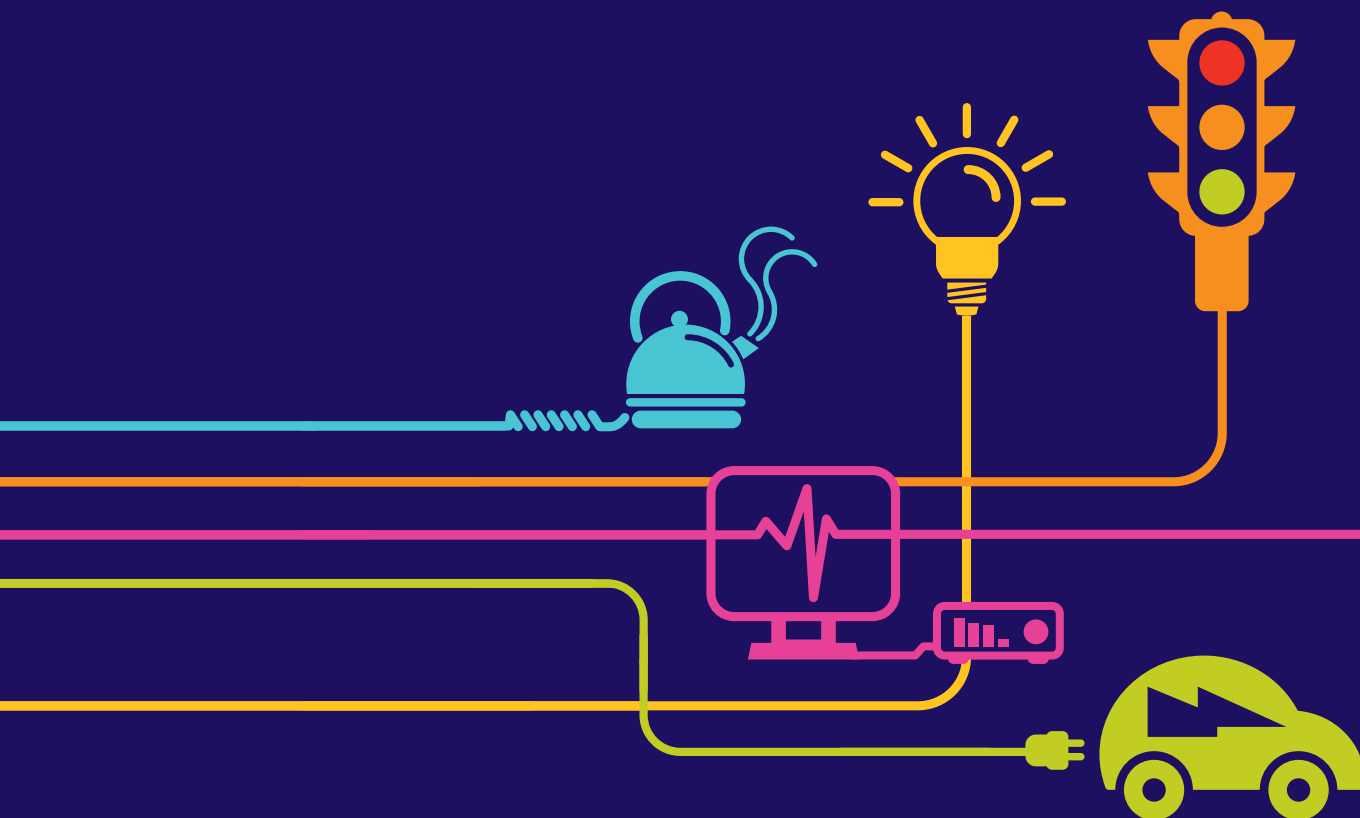


New and Updated Photomontages Explanatory Note

Hinkley Point C Connection Project

*Regulation 5(2)(a) of the Infrastructure Planning
(Applications: Prescribed Forms and Procedure)
Regulations 2009*





Hinkley Point C Connection Project

MARCH 2015

VOLUME 8.7.1 – NEW AND UPDATED PHOTOMONTAGES

Document Control			
Document Properties			
Organisation		National Grid	
Author		Hilary Brett, TEP	
Approved By		Ian Grimshaw, TEP	
Title		New and Updated Photomontages	
Document Reference		Volume 8.7.1	
Date	Version	Status	Description/Changes
23/03/2015	A	Live	Submission to ExA

Table of Contents

1 Introduction 1

1.1 Background..... 1

APPENDICES (VOLUME 8.7.2)

Appendix 1: New Verified Photomontage Viewpoint Table

NEW VERIFIED PHOTOMONTAGES (VOLUME 8.7.3)

Photomontage Viewpoint Location Plan

See Table 1.1 of this document for schedule of new verified photomontages

UPDATED VERIFIED PHOTOMONTAGES (VOLUME 8.7.4)

See Table 1.1 of this document for schedule of updated verified photomontages

1 INTRODUCTION

1.1 Background

- 1.1.1 In response to a number of matters raised during the Examination, National Grid Electricity Transmission plc (National Grid) has produced a series of new and updated photomontages. The new and updated photomontages are contained in **Volume 8.7.3** and **8.7.4** respectively.
- 1.1.2 In summary, the new and updated photomontages comprise:
- new photomontages prepared in response to the Examining Authority's First Written Questions;
 - a new photomontage prepared in response to the Joint Council's Statement of Common Ground;
 - updated photomontages prepared in response to the Joint Council's Statement of Common Ground; and
 - updated photomontages to reflect the re-alignment of the proposed 400kV overhead line between pylons LD120 and LD122 due to the extension of the Wessex Water facility in Avonmouth.
- 1.1.3 A photomontage viewpoint location plan is provided at **Figure 8.7.3.1 – 8.7.3.11 (Volume 8.7.3)**. This identifies the location of new photomontages only. A photomontage viewpoint table describing the location of the new photomontage viewpoints, to be read alongside the location plan, is provided at **Appendix 1 (Volume 8.7.2)**. The location of each updated photomontage viewpoint is provided at ES **Volume 5.18.1**.
- 1.1.4 Where updated photomontages have been prepared, these replace previously submitted photomontages contained in Environmental Statement (ES) **Volume 5.18**.
- 1.1.5 All new and updated verified photomontages have been produced using 3D computer modelling and accurate site survey in accordance with the method for the production of verified photomontages which is described in the visual assessment at ES **Volume 5.7.1.1, Section 7.5** and at ES **Volume 5.7.2.3, Appendix 7J**.
- 1.1.6 **Table 1.1** sets out a schedule of the new and updated photomontages contained in **Volume 8.7.3** and **8.7.4**. The table describes the purpose of the submission and if the photomontage represents a new photomontage or an update to a previously submitted photomontage. Where the photomontage is an update to a previously submitted photomontage, the superseded Volume and Figure reference is provided.

Table 1.1 New and Updated Photomontage Schedule

Reference	Title of Photomontage/Document	Purpose of Submission	Update to replace previously submitted Volume/New Photomontage	Additional Comments
Volume 8.7.3 - New photomontages prepared in response to Examining Authority's First Written Questions (Volume 8.1.2)				
Volume 8.7.2, Appendix 1	Additional Verified Photomontage Viewpoint Table	Provides the description of the new photomontage viewpoint location	Update to replace previously submitted Volume 8.2.25, Appendix 9.24c.1.1	The photomontage viewpoint table and location plan updates information previously submitted at Deadline 2 (Volume 8.2.25, Appendix 9.24c.1.1 and Appendix 9.24c.1.2). Following the site visit, locations were updated slightly. This is described in the Additional Verified Photomontage Viewpoint Table (Volume 8.7.2, Appendix 1).
Volume 8.7.3.1, Figure 8.7.3.1 - 8.7.3.11	Additional Verified Photomontage Viewpoint locations	Identifies the location of the new photomontage viewpoint	Update to replace previously submitted Volume 8.2.25, Appendix 9.24c.1.2	
Volume 8.7.3, Figure 8.7.3.12	Verified Photomontage Viewpoint VPE12 during operation	Submitted in response to Examining Authority's First Written Question 8.16(a) (Volume 8.1.2)	New Photomontage	Thirteen additional photomontages are provided in response to Written Questions 8.16 a) to 8.16 h). The locations of the new photomontages were agreed with the Joint Councils and HBMCE (formerly English Heritage).
Volume 8.7.3, Figure 8.7.3.13	Verified Photomontage Viewpoint VPG13 during operation	Submitted in response to Examining Authority's First Written Question 8.16(a) (Volume 8.1.2)	New Photomontage	
Volume 8.7.3, Figure 8.7.3.14	Verified Photomontage Viewpoint VPG14 during operation	Submitted in response to Examining Authority's First Written Question 8.16(a) (Volume 8.1.2)	New Photomontage	
Volume 8.7.3, Figure 8.7.3.15	Verified Photomontage Viewpoint VPD28 during operation	Submitted in response to Examining Authority's First Written Question 8.16(b) (Volume 8.1.2)	New Photomontage	

Reference	Title of Photomontage/Document	Purpose of Submission	Update to replace previously submitted Volume/New Photomontage	Additional Comments
Volume 8.7.3, Figure 8.7.3.16	Verified Photomontage Viewpoint VPD29 during operation	Submitted in response to Examining Authority's First Written Question 8.16(b) (Volume 8.1.2)	New Photomontage	
Volume 8.7.3, Figure 8.7.3.17	Verified Photomontage Viewpoint VPD30 during operation	Submitted in response to Examining Authority's First Written Question 8.16(c) (Volume 8.1.2)	New Photomontage	
Volume 8.7.3, Figure 8.7.3.18	Verified Photomontage Viewpoint VPC17 during operation	Submitted in response to Examining Authority's First Written Question 8.16(d) (Volume 8.1.2)	New Photomontage	
Volume 8.7.3, Figure 8.7.3.19	Verified Photomontage Viewpoint VPB30 during operation	Submitted in response to Examining Authority's First Written Question 8.16(e) (Volume 8.1.2)	New Photomontage	
Volume 8.7.3, Figure 8.7.3.20	Verified Photomontage Viewpoint VPB31 during operation	Submitted in response to Examining Authority's First Written Question 8.16(f) (Volume 8.1.2)	New Photomontage	
Volume 8.7.3, Figure 8.7.3.21	Verified Photomontage Viewpoint VPB32 during operation	Submitted in response to Examining Authority's First Written Question 8.16(f) (Volume 8.1.2)	New Photomontage	
Volume 8.7.3, Figure 8.7.3.22	Verified Photomontage Viewpoint VPA10 during operation	Submitted in response to Examining Authority's First Written Question 8.16(g) (Volume 8.1.2)	New Photomontage	
Volume 8.7.3, Figure 8.7.3.23	Verified Photomontage Viewpoint VPG10 during operation	Submitted in response to Examining Authority's First Written Question 8.16(h) (Volume 8.1.2)	New Photomontage	

Reference	Title of Photomontage/Document	Purpose of Submission	Update to replace previously submitted Volume/New Photomontage	Additional Comments
Volume 8.7.3, Figure 8.7.3.24	Verified Photomontage Viewpoint VPG11 during operation	Submitted in response to Examining Authority's First Written Question 8.16(h) (Volume 8.1.2)	New Photomontage	
Volume 8.7.3, Figure 8.7.3.25	Verified Photomontage Viewpoint VPD31 during operation and after 15 years	Submitted in response to Examining Authority's First Written Question 9.24(c) (Volume 8.1.2)	New Photomontage	Two additional photomontages are provided in response to Written Question 9.24 c). The locations of the photomontages were agreed with the landowner and comprise a viewpoint from outside the north elevation of the property and a viewpoint from the farm track beyond the garden boundary wall.
Volume 8.7.3, Figure 8.7.3.26	Verified Photomontage Viewpoint VPD33 during operation and after 15 years	Submitted in response to Examining Authority's First Written Question 9.24(c) (Volume 8.1.2)	New Photomontage	
Volume 8.7.3, Figure 8.7.3.27	Verified Photomontage Viewpoint VPF9 preferred route Option A and alternative route Option B during operation	Submitted in response to Examining Authority's First Written Question 9.26 (Volume 8.1.2)	New Photomontage	National Grid has provided two additional photomontages in response to Written Question 9.26. The locations of the photomontages were agreed with Avonside CPRE and comprise: a viewpoint from A369 The Portbury Hundred near the roundabout with Portbury Common and Sheepway; and a viewpoint from PRoW LA13/45/10 across Nailsea Moor north of Nailsea.
Volume 8.7.3, Figure 8.7.3.28	Verified Photomontage Viewpoint VPD32 during operation	Submitted in response to Examining Authority's First Written Question 9.26 (Volume 8.1.2)	New Photomontage	
Volume 8.7.3, Figure 8.7.3.29	Verified Photomontage Viewpoint VPF8 during operation	Submitted in response to Examining Authority's First Written Question 9.27 (Volume 8.1.2)	New Photomontage	National Grid has provided four additional photomontages in response to Written Question 9.27 (two more than originally

Reference	Title of Photomontage/Document	Purpose of Submission	Update to replace previously submitted Volume/New Photomontage	Additional Comments
Volume 8.7.3, Figure 8.7.3.30	Verified Photomontage Viewpoint VPF10 during operation	Submitted in response to Examining Authority's First Written Question 9.27 (Volume 8.1.2)	New Photomontage	proposed). The locations of the photomontages were agreed with the landowner and interested parties (Mr Hall, Mr Fox and the residents of park home number 18). The photomontages show the anticipated change in view from two viewpoints from the internal access road junction at the centre of Elm Tree Park (in order to encompass the full extent of view); a viewpoint from the entrance to Elm Tree Park; and a viewpoint from the rear garden of park home number 18 at the southeast corner of Elm Tree Park.
Volume 8.7.3, Figure 8.7.3.31	Verified Photomontage Viewpoint VPF11 during operation	Submitted in response to Examining Authority's First Written Question 9.27 (Volume 8.1.2)	New Photomontage	
Volume 8.7.3, Figure 8.7.3.32	Verified Photomontage Viewpoint VPF12 during operation	Submitted in response to Examining Authority's First Written Question 9.27 (Volume 8.1.2)	New Photomontage	
Volume 8.7.3 - New photomontage prepared in response to Joint Councils' Statement of Common Ground (Volume 8.3.12)				
Volume 8.7.3, Figure 8.7.3.33	Verified Photomontage Viewpoint VPG12 during operation	Submitted in response to Joint Councils' Statement of Common Ground Issues 6.13 and 7.17 (Volume 8.3.12)	New Photomontage	-
Volume 8.7.4 - Updated photomontages prepared in response to Joint Councils' Statement of Common Ground (Volume 8.3.12)				
Volume 8.7.4, Figure 8.7.4.1	Verified Photomontage Viewpoint VPB12 during operation	Submitted in response to Joint Councils' Statement of Common Ground Issues 6.13 and 7.17 (Volume 8.3.12)	Update to replace previously submitted Volume 5.18.2.4, Figure 18.2.20	Photomontages updated by National Grid to include the River Axe Cables Bridge Option and the Towerhead Brook Cables Bridge,
Volume 8.7.4, Figure 8.7.4.2	Verified Photomontage Viewpoint VPB20 on completion and after 15 years	Submitted in response to Joint Council Statement of Common Ground Issues 6.13 and 7.17 (Volume 8.3.12)	Update to replace previously submitted Volume 5.18.2.5, Figure 18.2.29	

Reference	Title of Photomontage/Document	Purpose of Submission	Update to replace previously submitted Volume/New Photomontage	Additional Comments
Volume 8.7.4, Figure 8.7.4.3	Verified Photomontage Viewpoint VPC2 on completion and after 15 years	Submitted in response to Joint Council Statement of Common Ground Item 6.13 and 7.17 (Volume 8.3.12)	Update to replace previously submitted Volume 5.18.2.7, Figure 18.2.40	
Volume 8.7.4, Figure 8.7.4.4	Verified Photomontage Viewpoint VPC6 on completion and after 15 years	Submitted in response to Joint Council Statement of Common Ground Item 6.13 and 7.17 (Volume 8.3.12)	Update to replace previously submitted Volume 5.18.2.7, Figure 18.2.44	
Volume 8.7.4, Figure 8.7.4.5	Verified Photomontage Viewpoint VPC15 during operation	Submitted in response to Joint Council Statement of Common Ground Item 6.13 and 7.17 (Volume 8.3.12)	Update to replace previously submitted Volume 5.18.2.7, Figure 18.2.45	
Volume 8.7.4, Figure 8.7.4.6	Verified Photomontage Viewpoint VPC8 during operation	Submitted in response to Joint Council Statement of Common Ground Item 6.13 and 7.17 (Volume 8.3.12)	Update to replace previously submitted Volume 5.18.2.8, Figure 18.2.47	
Volume 8.7.4, Figure 8.7.4.7	Verified Photomontage Viewpoint VPC12 on completion and after 15 years	Submitted in response to Joint Council Statement of Common Ground Item 6.13 and 7.17 (Volume 8.3.12)	Update to replace previously submitted Volume 5.18.2.8, Figure 18.2.51	
Volume 8.7.4, Figure 8.7.4.8	Verified Photomontage Viewpoint VPC16 during operation	Submitted in response to Joint Council Statement of Common Ground Item 6.13 and 7.17 (Volume 8.3.12)	Update to replace previously submitted Volume 5.18.3, Figure 18.3.2	
Volume 8.7.4 - Updated photomontages to reflect proposed Wessex Water re-alignment between pylons LD120 and LD122 (Volume 5.31)				
Volume 8.7.4, Figure 8.7.4.9	Verified Photomontage Viewpoint VPF1 preferred route Option A and alternative route Option B during operation	Updated photomontage to reflect proposed Wessex Water re-alignment (Volume 5.31)	Update to replace previously submitted Volume 5.18.2.16, Figure 18.2.92	Photomontages updated by National Grid to reflect proposed Wessex Water re-alignment between pylons LD120 and

Reference	Title of Photomontage/Document	Purpose of Submission	Update to replace previously submitted Volume/New Photomontage	Additional Comments
Volume 8.7.4, Figure 8.7.4.10	Verified Photomontage Viewpoint VPG2 during operation	Updated photomontage to reflect proposed Wessex Water re-alignment between pylons LD120 and LD122 (Volume 5.31)	Update to replace previously submitted Volume 5.18.2.18, Figure 18.2.100	LD122.
Volume 8.7.4, Figure 8.7.4.11	Verified Photomontage Viewpoint VPG3 during operation	Updated photomontage to reflect proposed Wessex Water re-alignment between pylons LD120 and LD122 (Volume 5.31)	Update to replace previously submitted Volume 5.18.2.18, Figure 18.2.101	
Volume 8.7.4, Figure 8.7.4.12	Verified Photomontage Viewpoint VPG5 during operation	Updated photomontage to reflect proposed Wessex Water re-alignment between pylons LD120 and LD122 (Volume 5.31)	Update to replace previously submitted Volume 5.18.2.18, Figure 18.2.103	
Volume 8.7.4, Figure 8.7.4.13	Verified Photomontage Viewpoint VPG7 during operation	Updated photomontage to reflect proposed Wessex Water re-alignment between pylons LD120 and LD122 (Volume 5.31)	Update to replace previously submitted Volume 5.18.2.19, Figure 18.2.105	
Volume 8.7.4, Figure 8.7.4.14	Verified Photomontage Viewpoint VPG8 preferred route Option A and alternative route Option B during operation	Updated photomontage to reflect proposed Wessex Water re-alignment between pylons LD120 and LD122 (Volume 5.31)	Update to replace previously submitted Volume 5.18.2.19, Figure 18.2.106	